

# SMARTset: Fire Panel Monitoring

Effectively and cost efficiently manage a disparate technical estate of technical equipment such as a fire panels using SMARTset as a single pane of glass

## Background

In the USA alone, in 2016 there were over 1.3 million reported fires, causing over USD 10 billion of property damage.

67% of major fires occur when buildings are unoccupied and 70% of businesses who suffer a major fire either don't re-open, or fail within 3 years

As a result of these sobering statistics, fire panels for detection of fires and alarm raising are ubiquitous within commercial building across the world. We've all walked past them and noticed them without really looking at them.

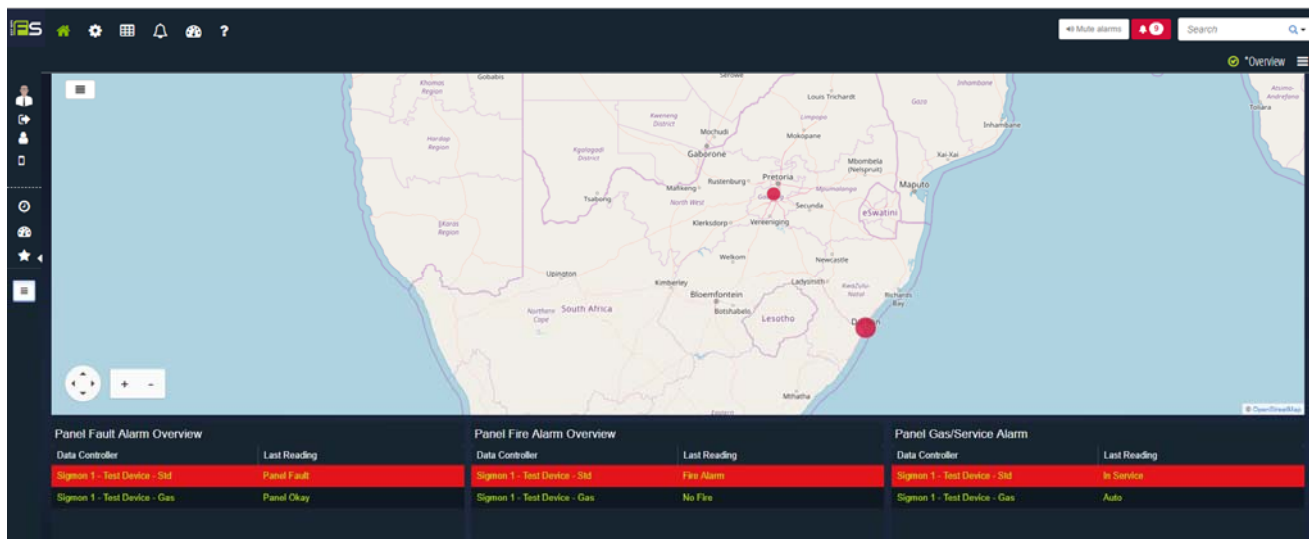


## Problem

The noise that alarms of all types make has become so ubiquitous, that in many cases alarms are ignored, as they are often assumed to be false alarms (sometimes correctly). They also assume that someone is there to hear the alarm and understand what has triggered it and where in the building.

That is a particular problem for commercial buildings, which if they are occupied for 50 hours (10 hours x 5 days) in the working week, are therefore unoccupied for 118 hours each week.

In that scenario where staff have gone home, lights out, windows and doors closed; who will raise the alarm in the event of a fire? This has serious implications should a fire break out in premises which are unoccupied.



Our client has a large network of fire panels spread over many thousands of square miles, many of which are permanently unmanned, with the associated risks. They were made by several different manufacturers at different times and use different communication protocols. They are also continuing to add to that network and needed a single solution that would work with all the existing equipment as well as new equipment

## Solution

The client decided to implement a SMARTset based solution to give them real time second by second visibility of every panel across their entire estate.

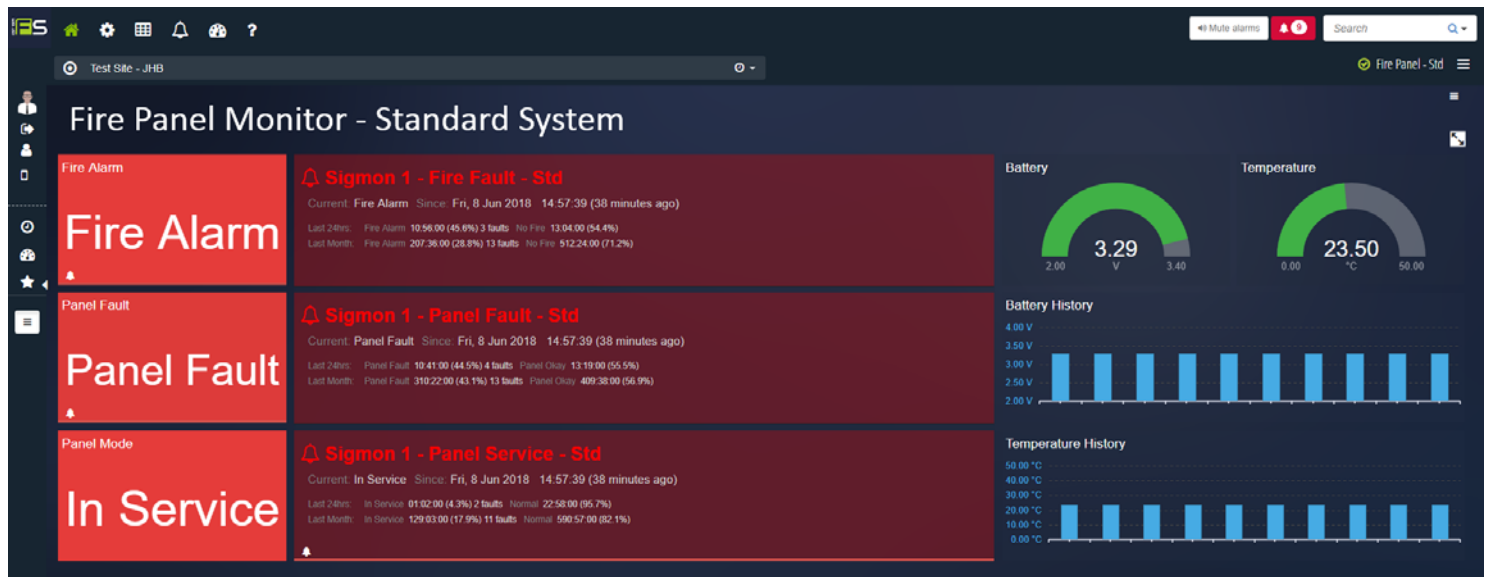
SMARTset's dashboards were used to give a bespoke overview of the entire estate using some of the range of built in "widgets" such as gauges and graphs.

SMARTset provides them with real time alerting of user defined alarms via text message, email, email link and virtual file system.

Customers can also elect to use the SMARTset reporting module which can be used to provide standard or bespoke reports with historical data covering 2 years or more.

## KEY POINTS

- Prevention**  
 Alarms give temperature threshold breaches by text message, email and virtual file system to allow swift maintenance
- Retro fit**  
 New and existing equipment can be worked with



## Further Reading

To understand more about the capabilities of SMARTset and its modules such as alarms and controls please go to <https://4ng.co.uk/smartset/modules/>

To see example case studies of SMARTset in use in different environments, please go to <https://4ng.co.uk/home/case-studies/>

